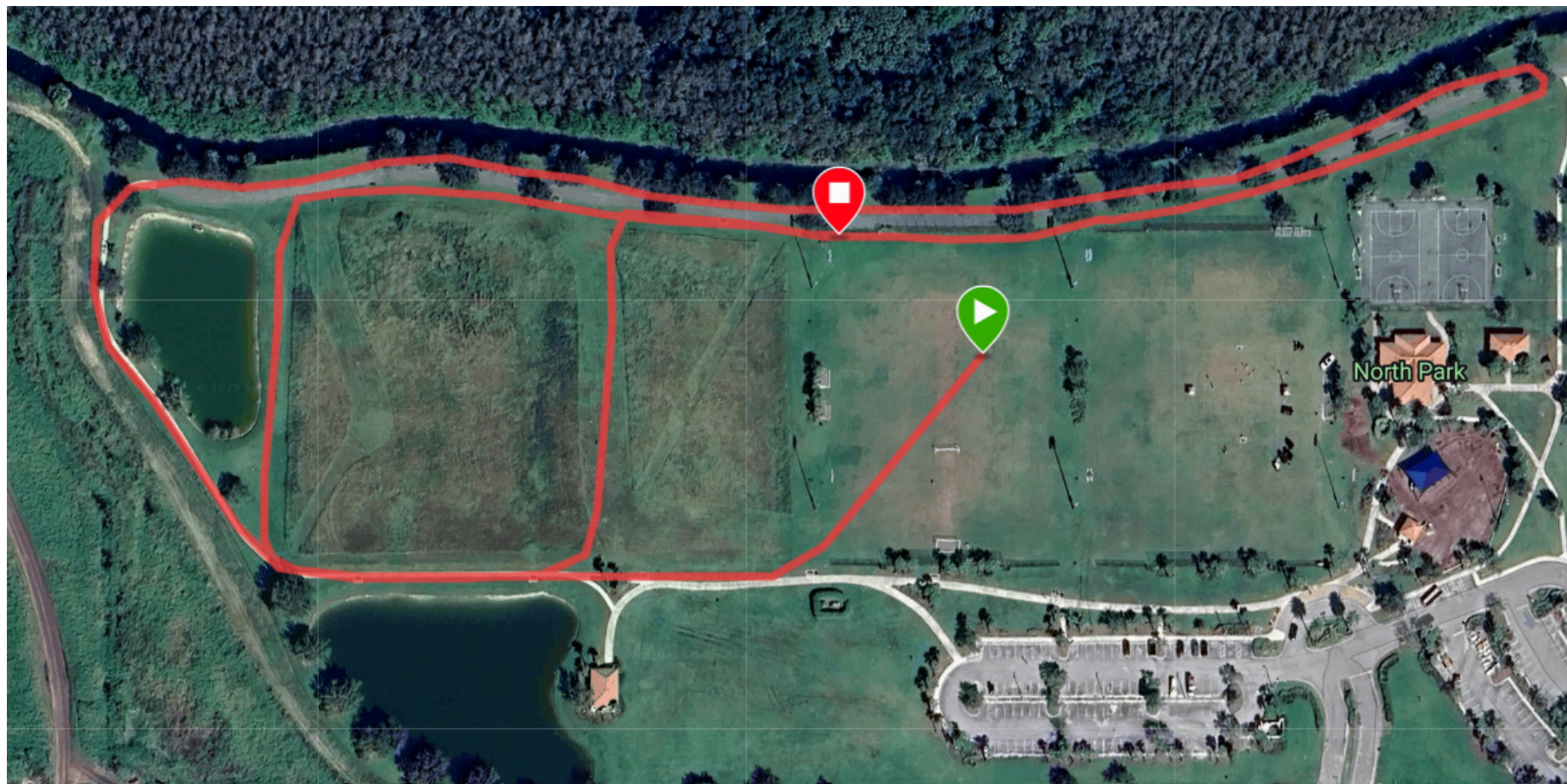


# DONAHUE ACADEMY AVE MARIA

## AVE INVITE 2025 -- 1 MILE COURSE



### COURSE DESCRIPTION

This is a single loop course starting in the middle of the soccer field farther from the playground and main pavilion. There is an asphalt path for coaches and spectators to use between the “out and back” on the north portion of the course. Note: the course includes the asphalt path on the west portion of the course, so .15 miles of the course will be on asphalt.