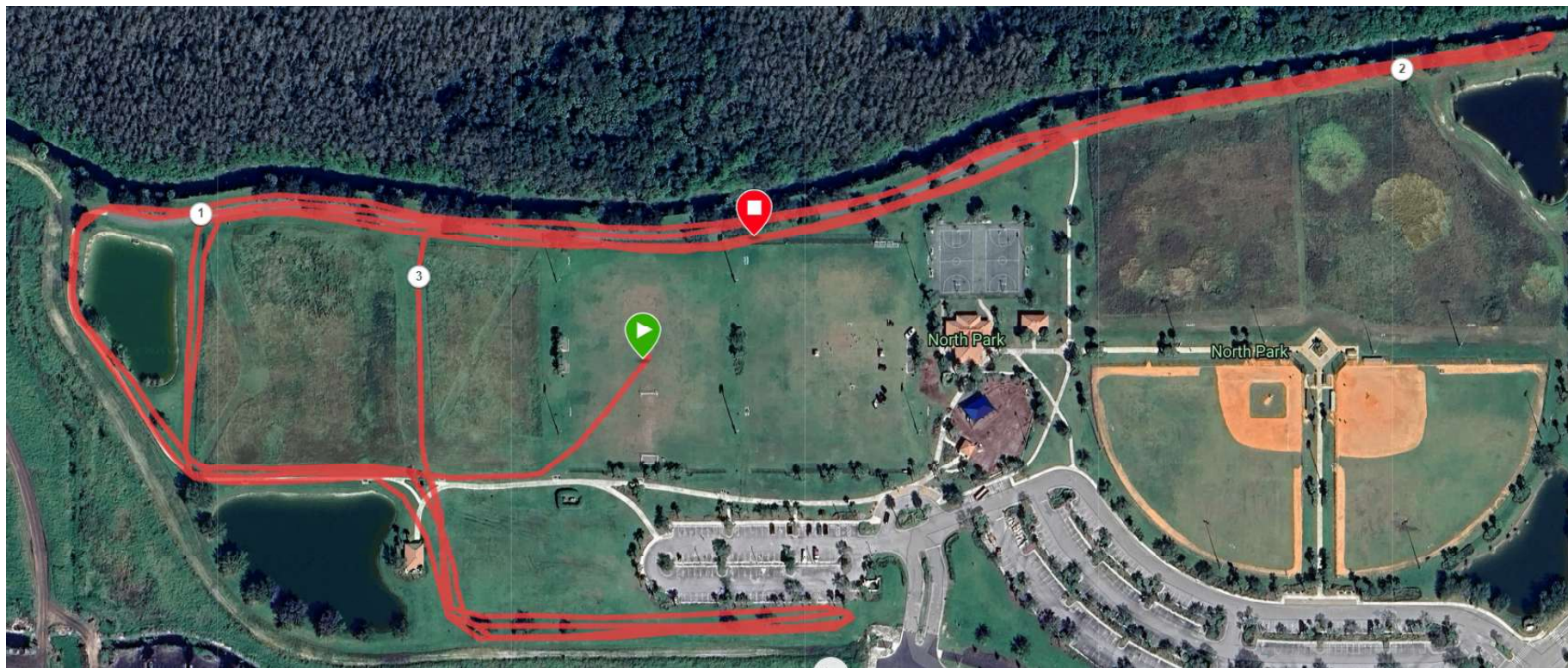


DONAHUE ACADEMY AVE MARIA

AVE INVITE 2025 -- 5K COURSE



COURSE DESCRIPTION

This is a 2-loop course starting in the middle of the soccer field farther from the playground and main pavilion. The loops are identical except for the start and finish, which will be on the soccer field close to the main pavilion. The first mile ends at the northwest corner of the course on the first lap, and the second mile ends near the turnaround at the northeast corner of the course on the second lap (as marked on the map above). These will be marked on the course. There is an asphalt path for coaches and spectators to use between the “out and back” on the north portion of the course. Note: the course includes the asphalt path on the west portion of the course, so .15 miles of each lap will be on asphalt (.3 miles total). But, runners in spikes will be able to run right beside the running path if they choose.